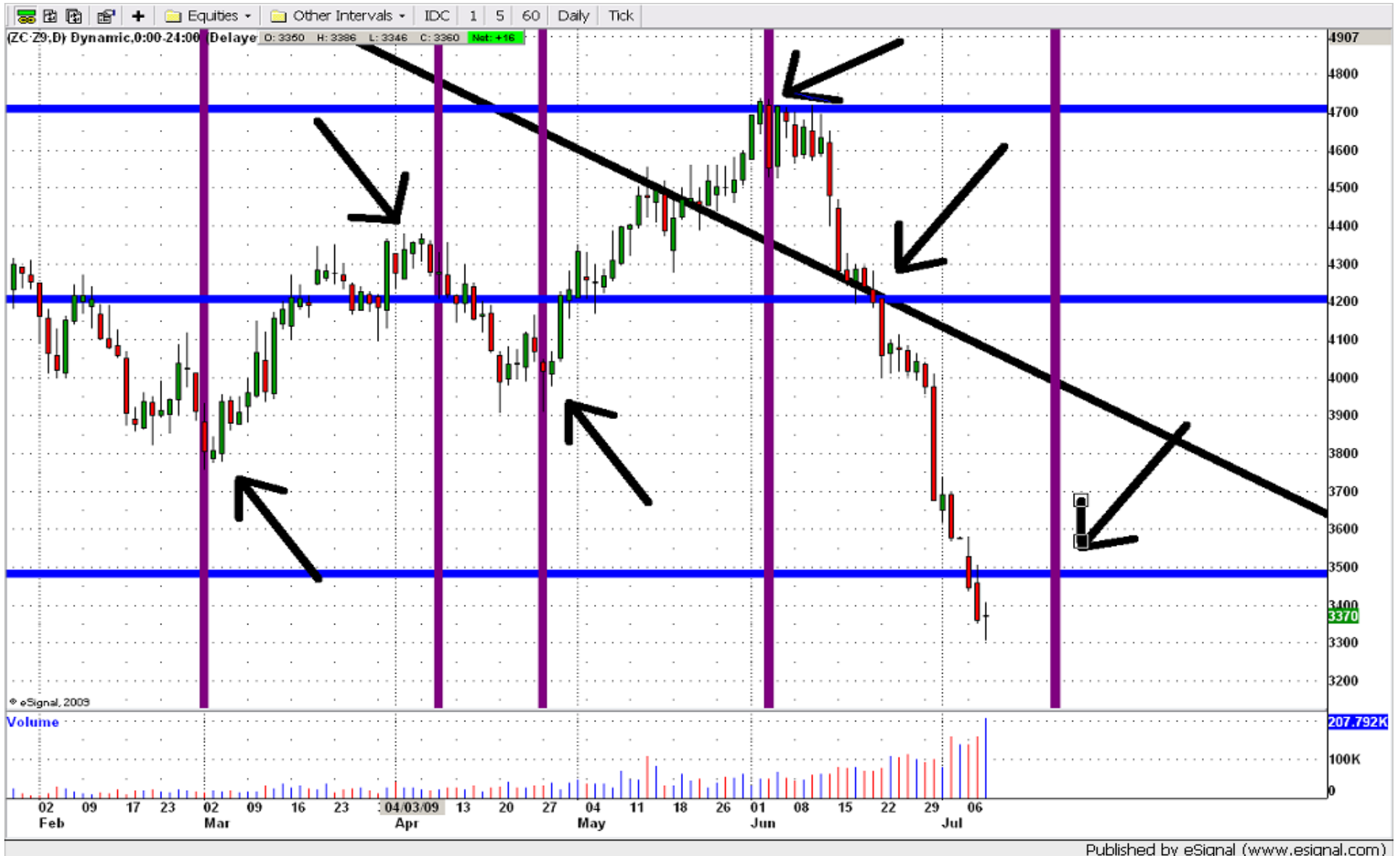


VIRVIRIM INVESTMENTS, LLC - ZC Z9 - Date - 07-09-09



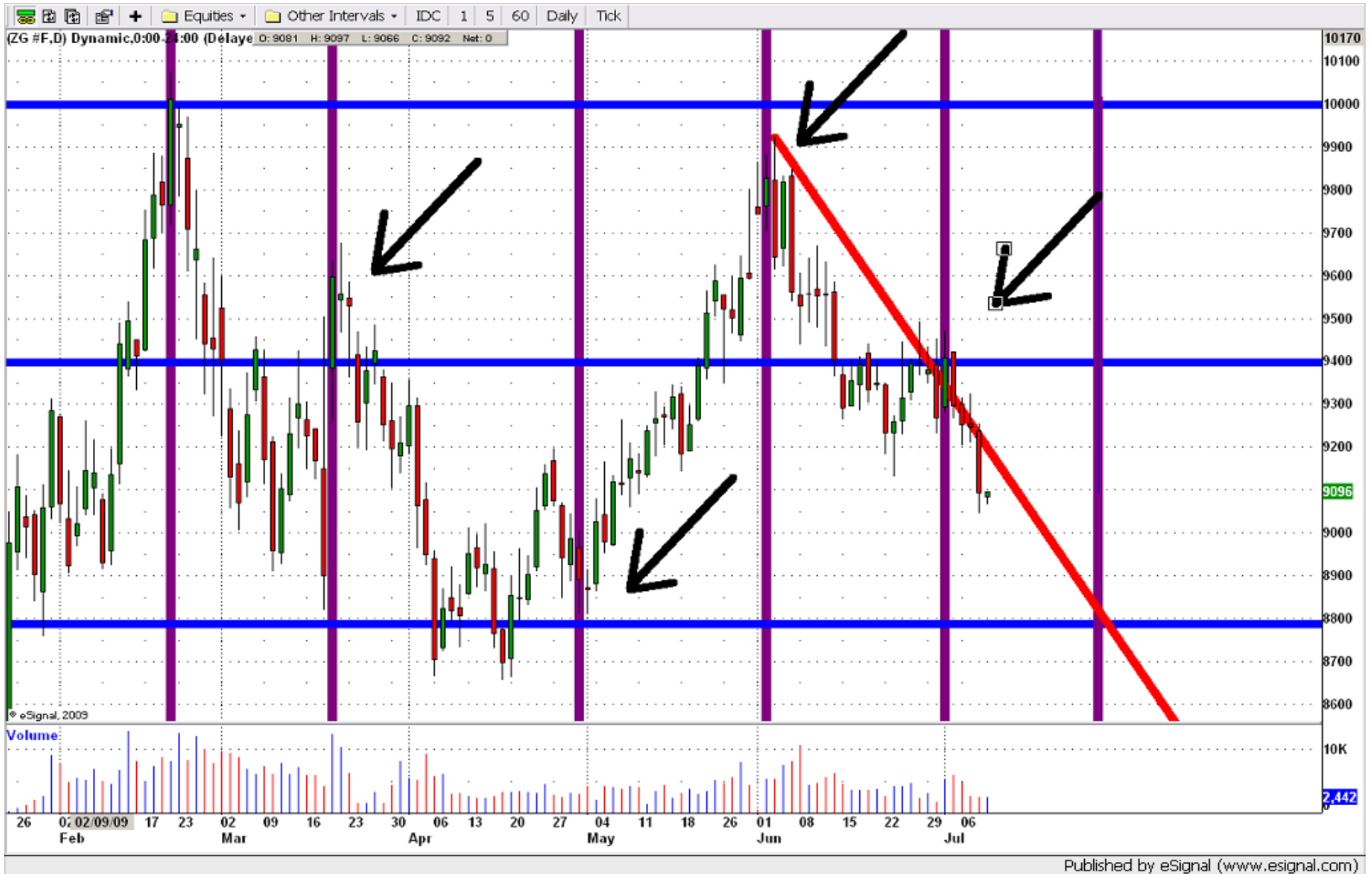
As you can see in the chart we have identified support and resistance with the blue horizontal lines. We have identified the angles with the red lines, and the violet lines indicate where we think the market is going to change direction. When the blue and violet lines cross that's our recommended entry and exit point.

VIRVIRIM INVESTMENTS, LLC - 6C #F - Date - 07-07-09



As you can see in the chart we have identified support and resistance with the blue horizontal lines. We have identified the angles with the red lines, and the violet lines indicate where we think the market is going to change direction. When the blue and violet lines cross that's our recommended entry and exit point.

VIRVIRIM INVESTMENTS, LLC - ZG #F - Date - 07-07-09



As you can see in the chart we have identified support and resistance with the blue horizontal lines. We have identified the angles with the red lines, and the violet lines indicate where we think the market is going to change direction. When the blue and violet lines cross that's our recommended entry and exit point.